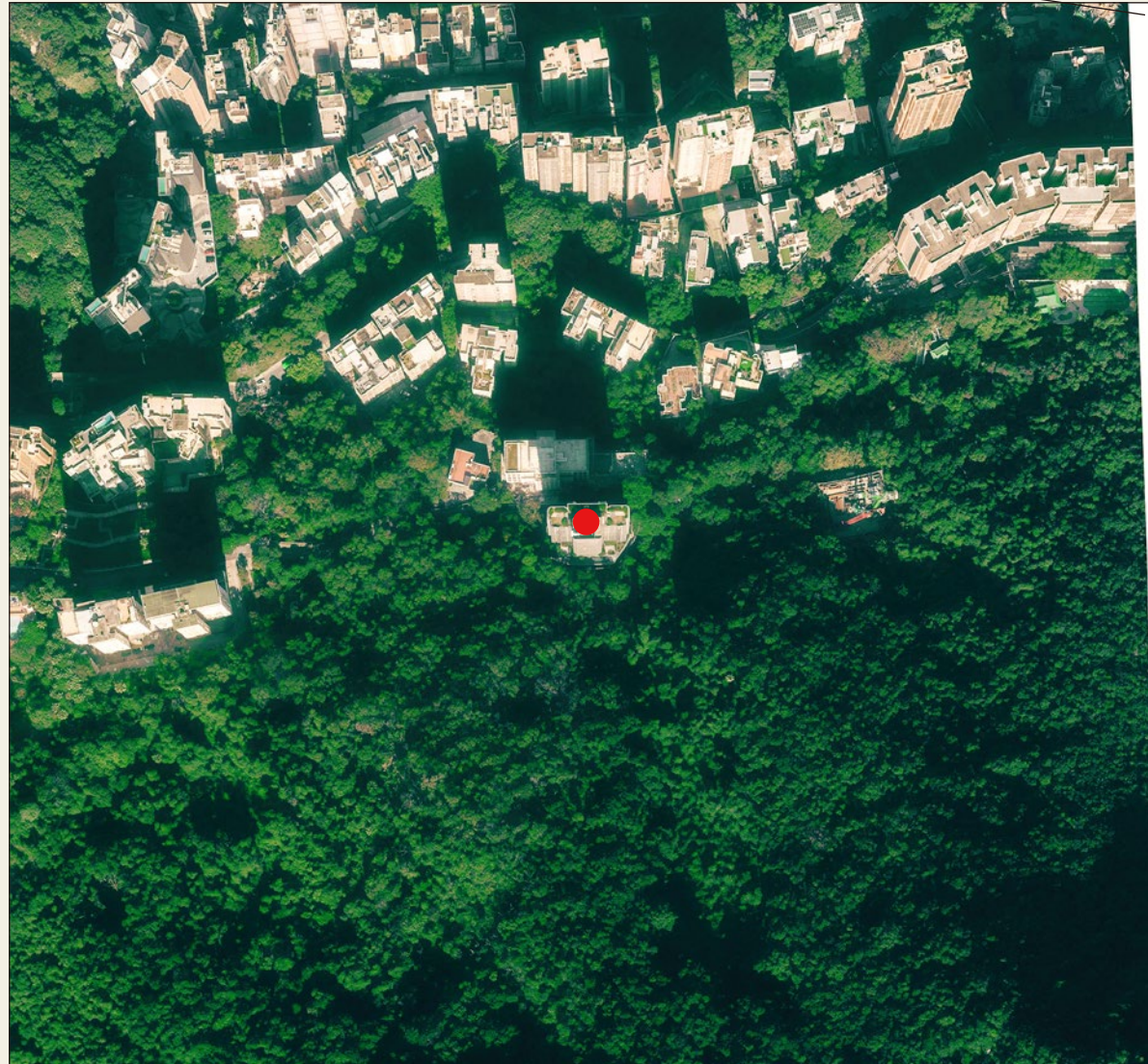


# AERIAL PHOTOGRAPH OF THE DEVELOPMENT 發展項目的鳥瞰照片

This blank area falls outside the coverage of the aerial photograph.  
鳥瞰照片並不覆蓋本空白範圍。



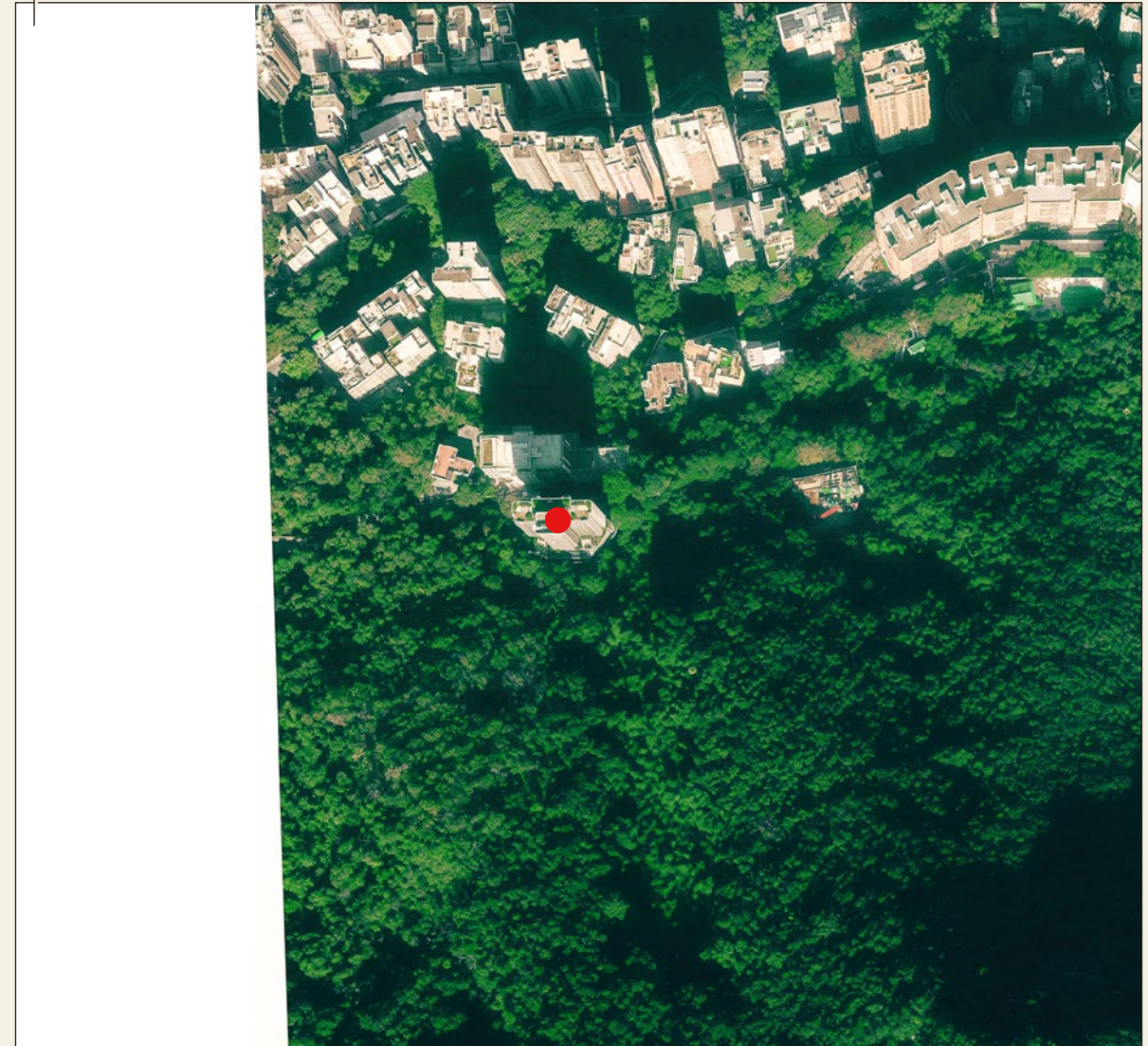
● ALTAMIRA 尚璟

Adopted from part of the aerial photograph taken by the Survey and Mapping Office of Lands Department at a flying height of 6,900 feet. Photo No. E177651C, dated 23/12/2022.  
摘錄自地政總署測繪處於 2022 年 12 月 23 日在 6,900 呎的飛行高度拍攝之鳥瞰照片，照片編號 E177651C。

Survey and Mapping Office, Lands Department, The Government of HKSAR  
© Copyright reserved - reproduction by permission only  
香港特別行政區政府地政總署測繪處 © 版權所有，未經不可，不得複製。



This blank area falls outside the coverage of the aerial photograph.  
鳥瞰照片並不覆蓋本空白範圍。



Adopted from part of the aerial photograph taken by the Survey and Mapping Office of Lands Department at a flying height of 6,900 feet. Photo No. E177652C, dated 23/12/2023.  
摘錄自地政總署測繪處於 2022 年 12 月 23 日在 6,900 呎的飛行高度拍攝之鳥瞰照片，照片編號 E177652C。

Notes :

1. The aerial photographs are available for free inspection at the sales office(s) during opening hours.
2. The aerial photographs may show slightly more than the area required under the Residential Properties (First-hand Sales) Ordinance due to the technical reason that the boundary of the Development is irregular.

附註：

1. 發展項目的鳥瞰照片可於售樓處開放時間內免費查閱。
2. 由於發展項目的邊界不規則的技術原因，此鳥瞰照片所顯示的範圍可能多於《一手住宅物業銷售條例》所要求顯示的範圍。